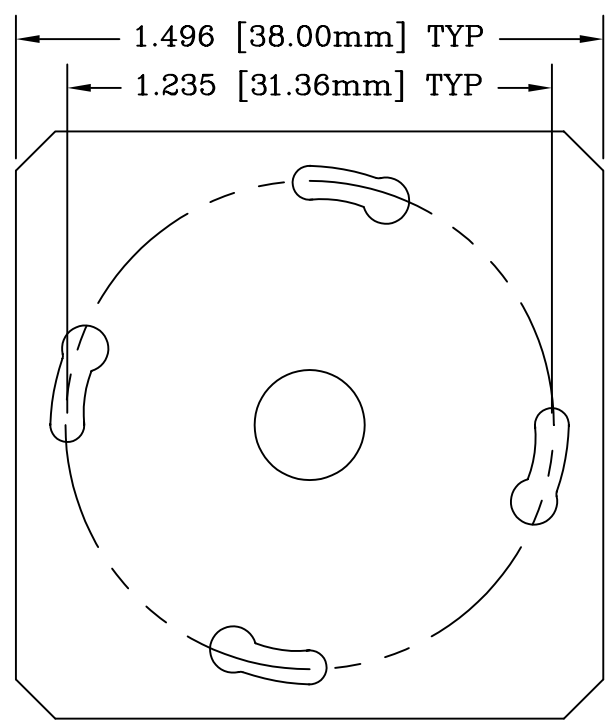
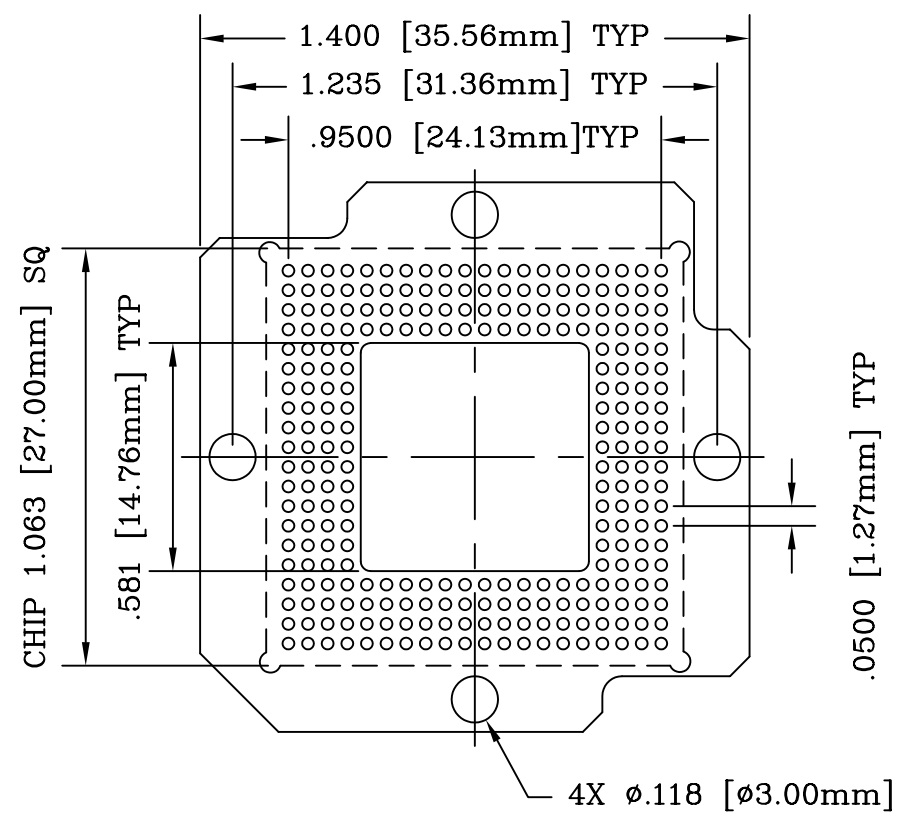


REV	DESCRIPTION	DATE	BY
A	NEW DRAWING	07/17/04	H.N.

SKT2004



KNOB LOCK



SOCKET

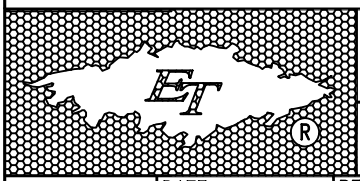
RECOMMENDED PAD LAYOUT

SOLDERTAIL STYLE		SOLDERTAIL = THRU HOLE STYLE	
REGULAR SMT STYLE XX = (-SM) YY = (-30)	RAISED SMT STYLE XX = (-SR) YY = (-29)	XX = (-ET) YY = (-70)	
30= standard SMD ("A" = .047 [1.20mm]) 29= raised SMD ("A" = .197 [5.00mm])		PIN DIAMETER FOR: -70(ET) = .0177 [0.45mm]	
BALL DIAMETER FOR: -29(SR) = .026 [0.66mm] -30(SM) = .026 [0.66mm]			

PACKAGE SPECIFICATIONS

PIN COUNT	= 256
LEAD PITCH	= 1.27mm
GRID SIZE	= 20X20
PACKAGE SIZE	= 27.00mm SQ

ALL DIMENSIONS ARE IN INCHES UNLESS OTHERWISE SPECIFIED



Emulation Technology, Inc.
 — VLSI and SMT ADAPTERS and ACCESSORIES —
 2344 Walsh Avenue, Bldg.F Santa Clara, Ca 95051
 TEL:(408)982-0660 FAX:(408)982-0664

SHEET: 1 OF 1	DATE: 07/17/04	REVISION: A	ASSEMBLY DRAWING
CHECKED: Perry Munroe	DRAWN: Huy Nguyen	ITEM: S-BGK-20-256-XX	
Scale 2:1		DO NOT SCALE DRAWING	DESCRIPTION: BPK-256-2BG020-YY

* All Dimensions Are Nominal For A .050 [1.27mm] Pitch BGA Package