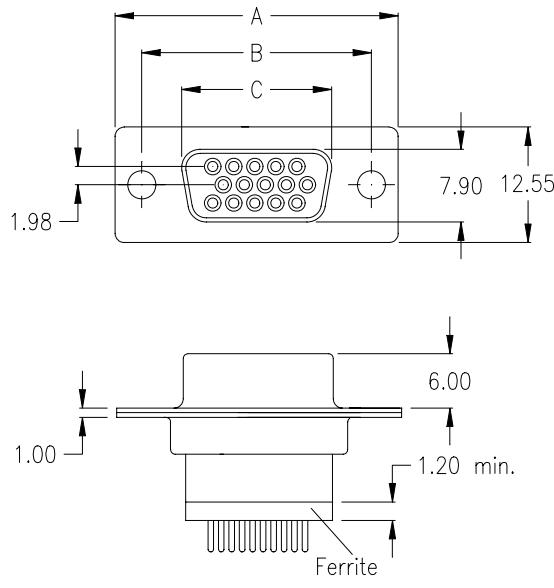


female



Ordering Code

SHF - xxx - B111 - 95 / F XXX

No. of contacts

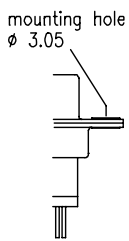
Option

Plating: **-95** = tin(leadfree)/gold

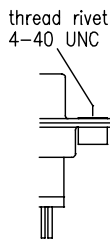
General Specification page 72

No. of contacts	Dimension		
	A	B	C
015	30.81 1.213	24.99 .984	16.33 .643
026	39.14 1.541	33.32 1.312	24.66 .971
044	53.04 2.088	47.04 1.852	38.38 1.511
062	69.32 2.729	63.50 2.500	54.84 2.159

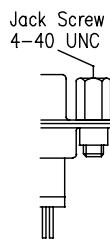
Options



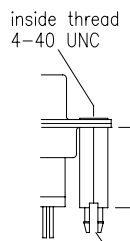
T0



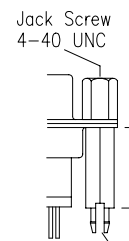
T



TJ



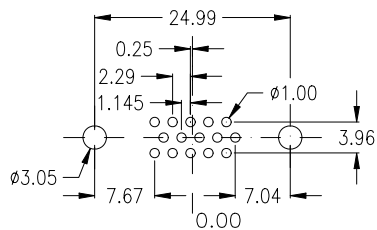
BR



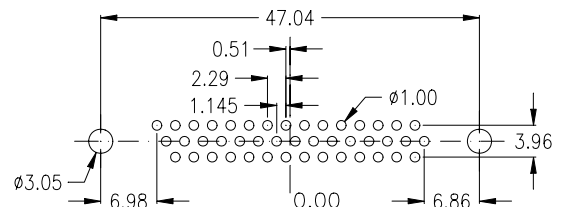
BR J

E	F	Option
12,70	4.60	3
14,50	5.20	4

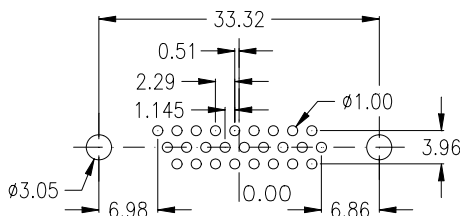
PCB Layout „female“



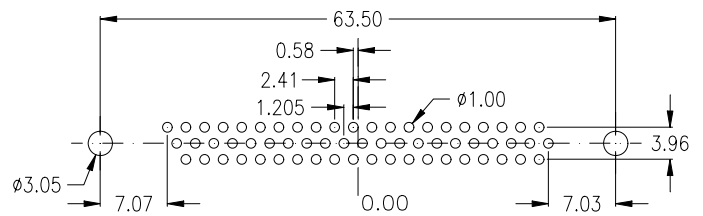
15 pin



44 pin



26 pin



62 pin